

## Table of Contents

Overlay III.....	2
Overlay .....	2
History .....	5

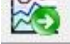
# Overlay III

## Annual Comparison

When comparing signals on an annual basis, average values for days, weeks or months are often used. In **PatternFinder** any measurement values can be used.

## Overlay

Create or open a project.

Click on the **Create Overlay Graph** button  and the following window appears:

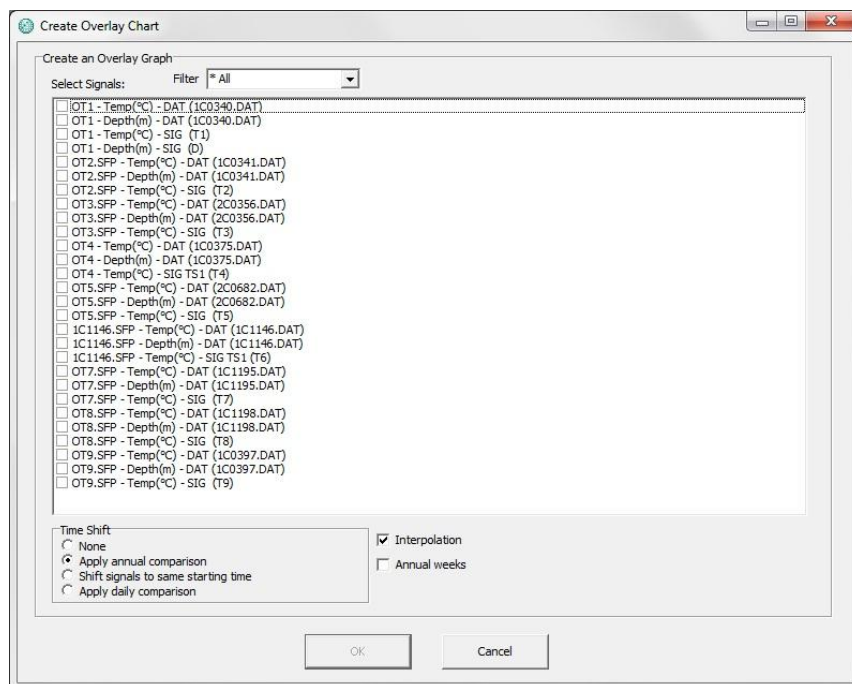


Figure 1 Create overlay chart

Select the signals you want to overlay. You can filter the signals by selecting one of the options in the drop-down list (see figure 2).

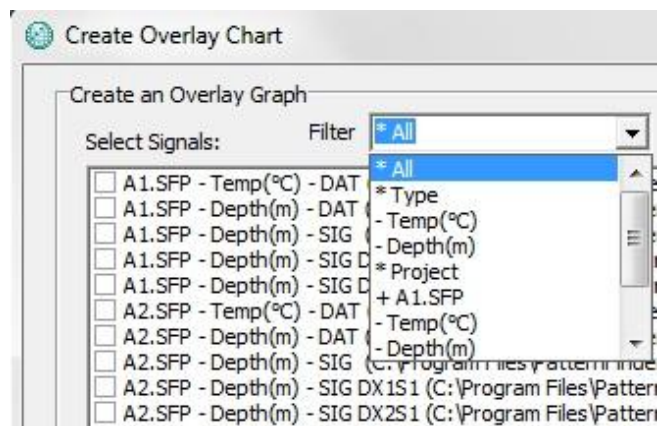


Figure 2 Filter

Under **Time Shift** select **Apply annual comparison** and **Interpolation** (see figure 1)

**Annual weeks:** By selecting this option the values are split up into ISO weeks.

Once the signals have been selected, click **OK**

The following chart appears:

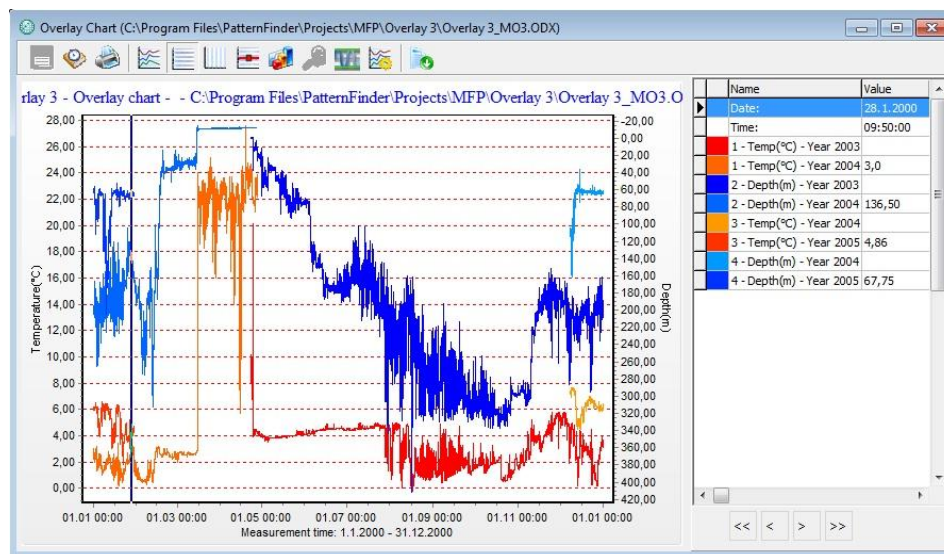


Figure 3 Overlay chart

In the chart the signals are divided by years starting with the earliest year found in the signals.

It is also possible to perform an annual analysis using only one signal (see figure 4):

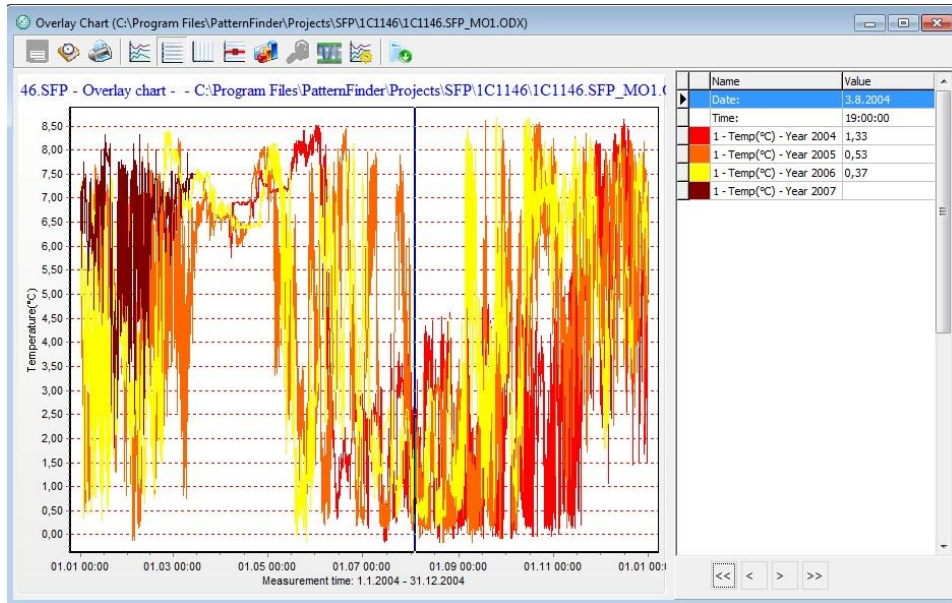



Figure 4 Overlay chart 1 signal

Click the **Overlay statistics** button  to perform an overlay statistics analysis.

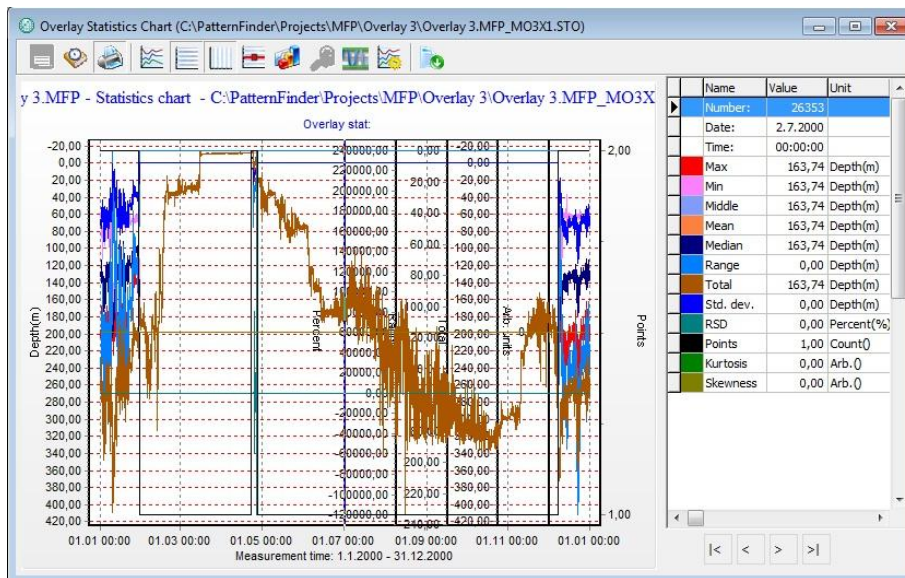



Figure 5 Overlay statistics chart

## History

Click the **History** button  on the chart bar to add comments and view information on the origin of the signal and the progress of the project (see figure 6). Click **Print** to print out the information (see figure 7).

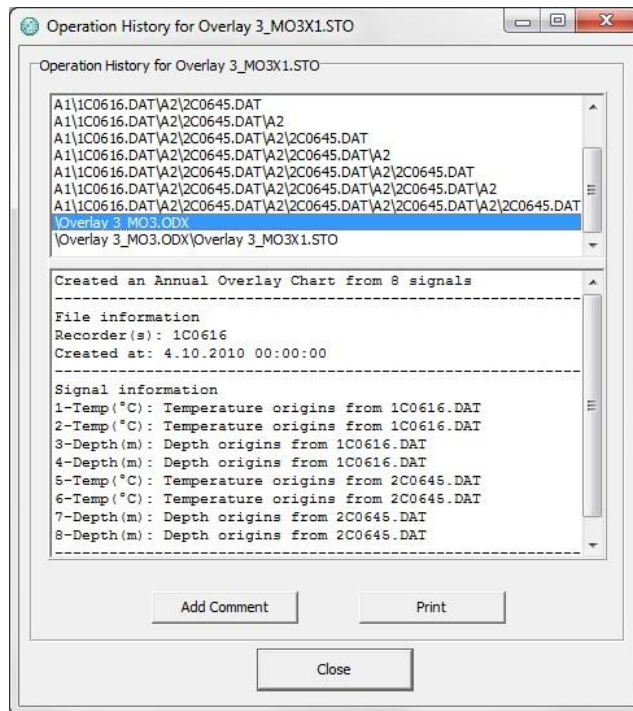


Figure 6 History

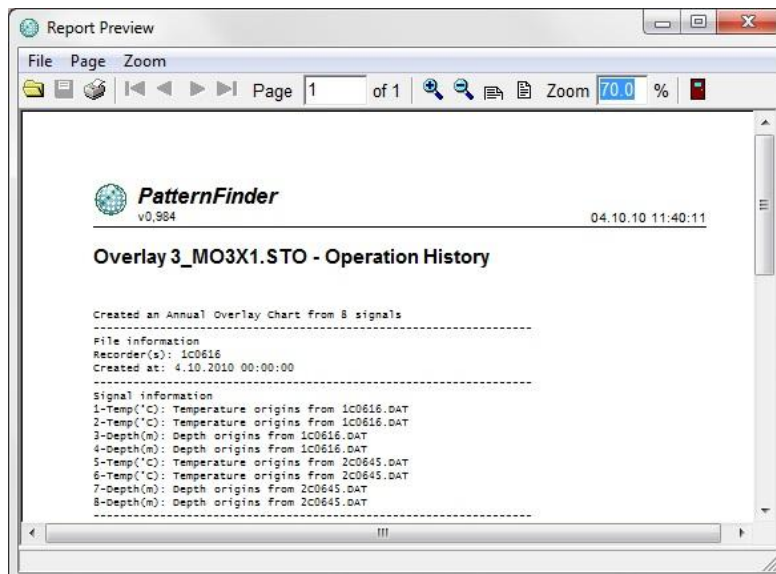


Figure 7 Print Preview